



三明學院
SANMING UNIVERSITY

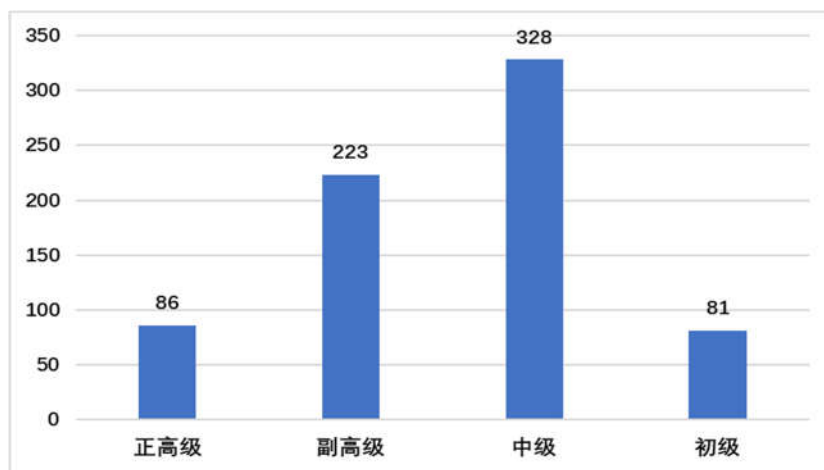
2017-2018

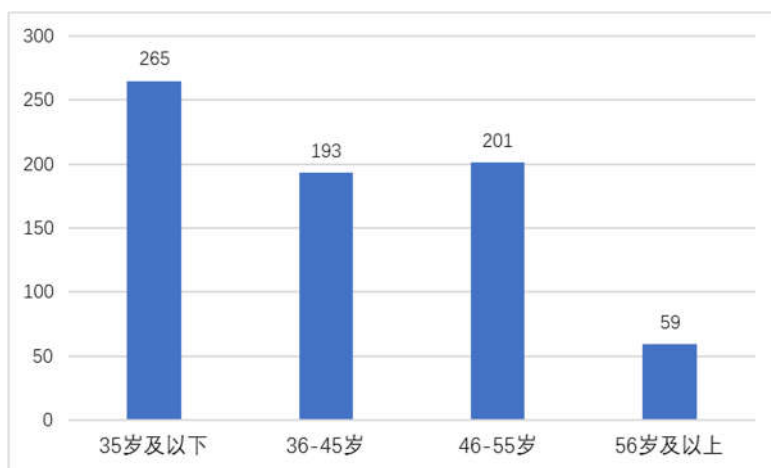
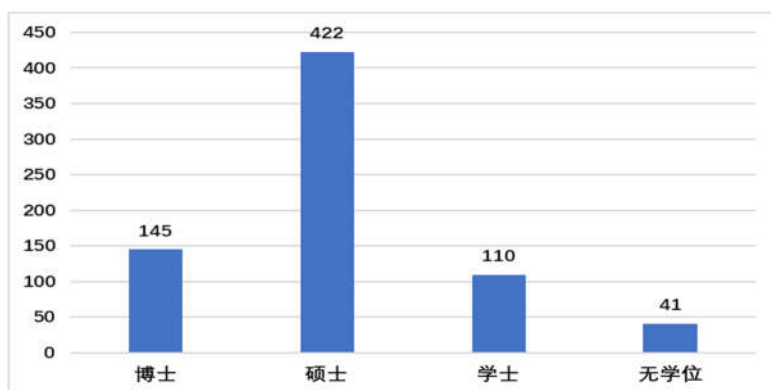
三明学院
2018年12月

2017- 2018

1			20
2			4
3			8
4			4
5			3
6			4
7			1

1.





3

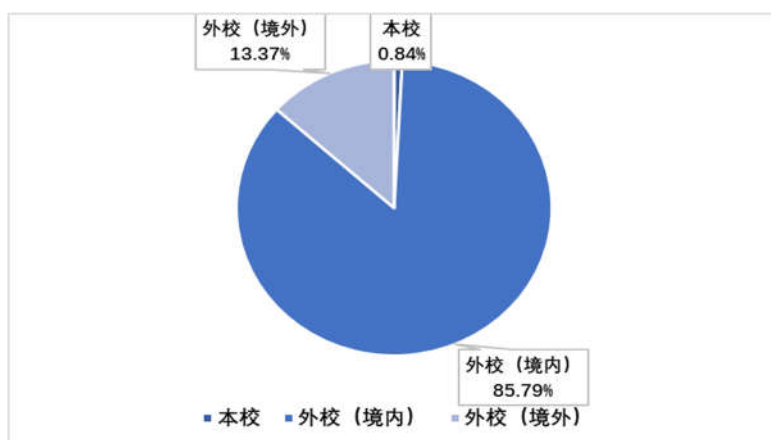


图 专任教师学缘结构

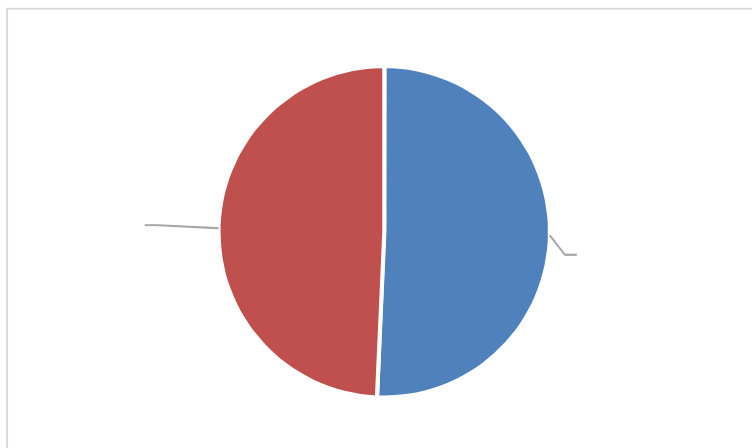


图 双师型教师所占比例

2

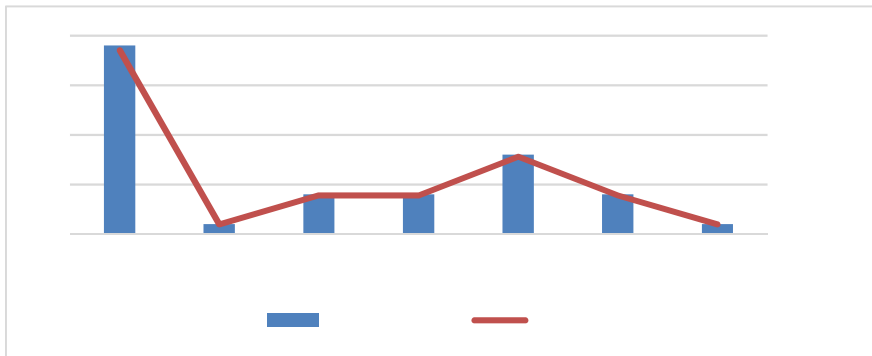
3

1.

2

3.

4.



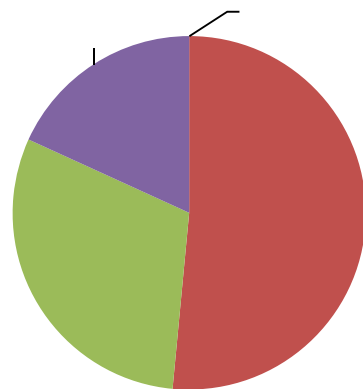
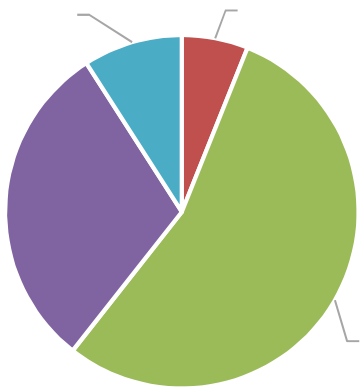
/						

/				

				798	17.97
				2864	64.49
				258	5.81
				521	11.73
				4441	100

1			2007	4479
2			2009	168
3			2010	172
4	IT		2010	1100
5			2010	785
6			2010	615
7			2011	976
8			2011	163

1.



2

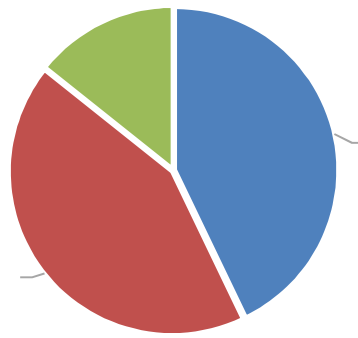
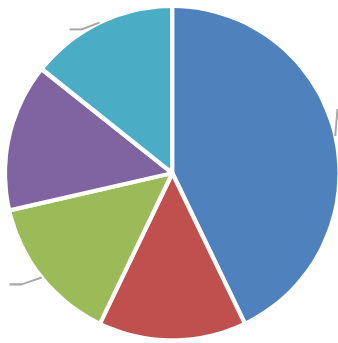
3.

		平方米)
	65	8312.73
	88	14830.66
	64	14371.52
	217	37514.91

1		6
2		238
3		2
4		10
5		32
6		50
7		1004.65
8		2
9		958
10		8074
11		50
		213
		71

1	“ +”			2016
2				2016
3				2017
4				2012
5				2015

6 ()



--	--	--	--

2017-2018

1-3

